

# ENVIRONMENTAL PRODUCT DECLARATION

as per ISO 14025 and EN 15804+A2

Owner of the Declaration	VM Building Solutions
Publisher	Institut Bauen und Umwelt e.V. (IBU)
Programme holder	Institut Bauen und Umwelt e.V. (IBU)
Declaration number	EPD-VMZ-20250162-IBA1-EN
Issue date	25/06/2025
Valid to	24/06/2030

## Engraved rolled zinc - AZENGAR® 3R - VMZINC® VM BUILDING SOLUTIONS

[www.ibu-epd.com](http://www.ibu-epd.com) | <https://epd-online.com>



## 1. General Information

### VM BUILDING SOLUTIONS

#### Programme holder

IBU – Institut Bauen und Umwelt e.V.  
Hegelplatz 1  
10117 Berlin  
Germany

#### Declaration number

EPD-VMZ-20250162-IBA1-EN

#### This declaration is based on the product category rules:

Building metals, 01/08/2021  
(PCR checked and approved by the SVR)

#### Issue date

25/06/2025

#### Valid to

24/06/2030



Dipl.-Ing. Hans Peters  
(Chairman of Institut Bauen und Umwelt e.V.)



Florian Pronold  
(Managing Director Institut Bauen und Umwelt e.V.)

### Engraved rolled zinc - AZENGAR® 3R - VMZINC®

#### Owner of the declaration

VM Building Solutions  
place Aimé Césaire 3  
93100 Montreuil  
France

#### Declared product / declared unit

1 kg of engraved rolled zinc - AZENGAR® 3R from VMZINC

#### Scope:

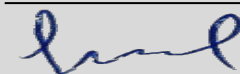
This Environmental Product Declaration in accordance with the *EN 15804* covers the life cycle of 1 kg of textured and mattified rolled zinc – AZENGAR® 3R manufactured in the French production plants located in Aubry and Viviez of the company VM Building Solutions. The textured and mattified rolled zinc 3R from VMZINC covered by this EPD can be used in buildings as roof, façade or rainwater systems.

The owner of the declaration shall be liable for the underlying information and evidence; the IBU shall not be liable with respect to manufacturer information, life cycle assessment data and evidences.

The EPD was created according to the specifications of EN 15804+A2. In the following, the standard will be simplified as *EN 15804*.

#### Verification

The standard EN 15804 serves as the core PCR	
Independent verification of the declaration and data according to ISO 14025:2011	
<input type="checkbox"/>	internally
<input checked="" type="checkbox"/>	externally



Dr.-Ing. Nikolay Minkov,  
(Independent verifier)



## 2. Product

### 2.1 Product description/Product definition

The product covered by this EPD is 1 kg of textured and mattified rolled zinc –AZENGAR® 3R in sheets or coils from VMZINC used for building envelope applications (roof, façade or rainwater systems). The textured and mattified rolled zinc from VMZINC is a copper and titanium zinc alloy, which has received a surface treatment. This product contains scraps from manufacturers and processors of rolled zinc products. This alloy contains zinc with very few alloy components (copper, titanium and aluminum). It has optimal mechanical and physical properties for applications in construction, in particular regarding mechanical resistance and resistance against creep deformation. From an aesthetical point of view, textured and mattified rolled zinc 3R is the lightest, most matt zinc. It is distinguished by its heterogeneous surface punctuated with asperities. For the placing on the market of the product in the European Union/European Free Trade Association (EU/EFTA) (with the exception of Switzerland). (with the exception of Switzerland) *Regulation (EU) No. 305/2011 (CPR)* applies. The product needs a declaration of performance taking into consideration *EN 14782:2006* Self-supporting metal sheet for roofing, external cladding and internal lining or *EN 14783:2006* Fully supported metal sheet and strip for roofing, external cladding and internal lining, and the CE-marking. For the application and use the respective national provisions apply.

### 2.2 Application

The textured rolled zinc in sheets and coils is used in numerous building applications:

- roof and façade cladding (CE-marked based on *EN14782:2006*, Self-supporting metal sheet for roofing, external cladding and internal lining or *EN14783:2013*, Fully supported metal sheet and strip for roofing, external cladding and internal lining)
- interior use
- roof drainage systems (gutters, downpipes and accessories according to *EN612*)
- Flashings, coverings,
- roof drainage systems (gutters, downpipes and accessories according to *EN612*)
- Ornaments under the brand name of "Ateliers d'ArtFrançais".

### 2.3 Technical Data

The main constructional data is presented in the following table:

#### Constructional data

Name	Value	Unit
Coefficient of thermal expansion	22	10 <sup>-6</sup> K <sup>-1</sup>
Tensile strength	152	N/mm <sup>2</sup>
Compressive strength	-	N/mm <sup>2</sup>
Modulus of elasticity	9000	N/mm <sup>2</sup>
Melting point	420	°C
Thermal conductivity	110	W/(mK)
Electrical conductivity at 20°C	17	Ω <sup>-1</sup> m <sup>-1</sup>
Density	7200	kg/m <sup>3</sup>

Product performance values in line with the *EN 988*.

Performance data of the product in accordance with the respective declaration of performance with respect to its essential characteristics according to *EN 14782* and *EN 14783* respectively.

### 2.4 Delivery status

Textured and mattified rolled zinc AZENGAR® 3R offer an other surface design than natural rolled zinc. It is produced by engraving and matting the natural rolled zinc (it complies with European standard *EN 988*).

Ø Dimensions Panels: 1000 x 2000 mm, 1000 x 2500, 1000 x 3000 mm;

Ø Coils with the following blanks: 200 mm/250 mm/280 mm/333 mm/400 mm/500 mm/600 mm 670 mm/1000 mm

Ø Thickness [mm]: 0.5 mm to 1.5 mm

Ø Weight: 3.6 kg/m<sup>2</sup> (t=0.5 mm) to 10.8 kg/m<sup>2</sup> (t=1.5mm)

### 2.5 Base materials/Ancillary materials

#### Composition of textured and mattified (Azengar)

Name	Value	Unit
Zinc CuTi (EN 988)	100	%

VMZINC® is an alloy of zinc with small amounts of copper and titanium. No compound of the alloy >0.1 % is listed in the 'Candidate List of Substances of Very High Concern for Authorisation' (SVHC) dated 01/2018. The product does not contain any substances with carcinogenic, mutagenic, reprotoxic (CMR) properties > 0.1 %. VMZINC® products do not contain biocide properties as defined by the (EU) *Biocidal Products Regulation (BPR) No. 528/2012*.

### 2.6 Manufacture

The manufacturing of the textured and mattified rolled VMZINC (AZENGAR 3R) takes place in 7 stages:

1. Recovery of rolled zinc scraps: The first step is to recover rolled zinc scraps across all of Europe, sorting and preparing them for direct introduction into the furnace. To do this, we mechanically sort the scraps and compress some of them to save storage space between Azengar 3R production campaigns.
2. Smelting: CuTi rolled zinc scraps (*EN 988*) are fed into the casting furnace. This loads the continuous casting machine at 500°C.
3. Casting and cooling: The molten metal is transferred into a continuous casting machine to harden there into the form of an approx. 12-millimetre-thick and one-meter wide continuous cast strand. The controlled cooling process in the system guarantees a fine, homogenous grain size.
4. Rolling: The cast strand is rolled into the desired thickness in three to five rolling operations. In the course of this process the temperature, rolling speed and degree of reduction are constantly monitored and adapted to achieve the desired mechanical properties and dimensions.
5. Engraving: This step is performed in Aubry (North) site. It aims to provide aesthetic differentiation by texturing the surface of the rolled zinc.
6. Matting: This stage is carried out on the site of Vivez (Aveyron); it aims to mattify the texture obtained during the engraving step.
7. Stretching and cutting: The final stages include stretching and cutting the rolled zinc into sheets and coils into the desired dimensions and weights.

The production plants of Viviez and Aubry are certified *ISO 9001*

(Quality management control).

## 2.7 Environment and health during manufacturing

All production sites for VM Building Solution construction products are certified in accordance with *ISO 14001*.

## 2.8 Product processing/Installation

General principles:

Rolled zinc from VMZINC® must be stored in a dry and ventilated place. This also applies to building site storage as well as to parts stored temporarily at the installation site. Coils are to be stored on pallets, so that moisture cannot penetrate into them (later water stains). Transport may only be carried out by enclosed vehicles. If the surfaces of natural rolled VMZINC are covered with films, make sure that the surfaces are well ventilated. Wet covering films may not come into direct contact with the titanium zinc surfaces to be covered. Rolled zinc from VMZINC which is wet from water may also not be directly covered.

The material is to be processed without tension.

Take into account the expansion coefficient for the installation of the product.

If for a compelling reason the rolled zinc from VMZINC work is carried out during the cold time of year, special measures are required with folding which incur additional costs. This must be in accordance with the construction management. With metal temperatures below 10°C and rapid deformation, whole batches have to be warmed up to prevent cracks from forming. This particularly applies to connections, for example, crimp folds and 180° handling.

### Assembly of the rolled zinc from VMZINC with other metals:

Electrolytic corrosion can occur when assembling with different metals if metal (-part) of the higher potential is arranged above it in the water's flow direction.

With the presence of dampness or moisture, damage can occur if the VMZINC system comes into contact with copper or unprotected (no galvanized) steel due to an electrochemical reaction. The direct proximate assembly of copper and rolled zinc from VMZINC components is always to be avoided.

### Assembly of rolled zinc from VMZINC with other building materials:

If VMZINC systems are to come into contact with precipitation water from unprotected bituminous roofing, these should be provided with protective coatings, as otherwise, you can reckon with so-called "bitumen corrosion".

Detailed processing information as for example types of fixings, deformation and joining techniques can be found in the corresponding information material from VM Building Solutions.

### Industrial safety, health and environmental protection measures:

With the processing/installation of VMZINC® products, no other health protection measures are required beyond the usual industrial safety measures (like e.g. protective gloves). No significant environmental pollution is triggered by the processing/assembly of the named products. No special

measures need to be taken to protect the environment.

### Residual materials and packaging:

Any VMZINC® residual materials and packaging on the building site must be collected separately. Rolled zinc products are 100% recyclable. In Europe, there is an extensive network which takes back zinc waste from building sites and recycles this for a huge variety of applications.

### Installation includes:

Fastening accessories for the installation of the roofing, façade, or rainwater drainage system (fastening brackets, screws, etc.). In the case of installing gutters, tin-lead or tin/zinc alloy is required for their soldering. The energy required for the installation of the roofing, façade, or rainwater drainage system (electrical energy for screwing, crimping, etc., and gas energy for heating the soldering iron).

## 2.9 Packaging

The packaging materials used are wooden pallets (transport), cardboard and plastics (films and wires).

All packaging can be recycled if the wastes generated in the building site are well managed.

The *waste keys* for the main packaging are:

-corrugated board - 15 01 01,

-wood pallets - 15 01 03.

## 2.10 Condition of use

The behaviour of textured mattified rolled zinc exposed to the atmosphere is the same as those of natural rolled zinc: a protective layer called patina occurs naturally. This protective layer ensures absolutely maintenance free of the surfaces of the rolled zinc from VMZINC and is responsible for the rolled zinc from VMZINC's high resistance to corrosion.

In the first stage zinc oxide is formed on the zinc surface. Zinc hydroxide then forms under the influence of moisture (rain). Under the influence of CO<sub>2</sub> from the atmosphere basic zinc carbonate is then formed, which is then the dense, adhesive and water-insoluble protective layer. This very dense and if injured, "self-healing" layer gives lifetime protection and keeps natural wear very low.

## 2.11 Environment and health during use

### **Environment**

Generally, zinc runoff coming from rolled zinc applications used in buildings does not create a risk to the environment.

Indeed, zinc is naturally present in the environment and has always been used by living organisms in their growth and development making zinc the third trace element the most important for human beings.

Furthermore, when zinc is released into the environment, a large amount reacts mainly by adsorption with the other components of the environment such as organic matter or oxides (we speak about speciation) leaving a small amount available to living organisms (we speak about bioavailability). Generally, in soil, more than 90 % of zinc emitted binds to soil particles, leaving only 10 % of the zinc available for living organisms; in water, 70 % of zinc emissions are captured into sediments (1).

This scientific knowledge about zinc behaviour in the environment (speciation and bioavailability) was incorporated into the risk assessment methods used for European regulations.

In all cases, whatever the type of products used in the building, where it is proposed to evacuate rainwater directly into the environment, an environmental impact assessment must be carried out.

Parameters influencing zinc runoff from building products are:

- Sulfur dioxide - SO<sub>2</sub> atmospheric content (the more there is sulfur dioxide, the more zinc runoff rate).

-Chlorides - Cl<sub>2</sub>- atmospheric content (the more there are chlorides, the more the runoff rate).

-Slope of the constructive element (the more the slope is high, the less the zinc runoff rate).

-Surface aspect of rolled zinc.

For human beings, zinc is the 3rd most important Zinc concentration into rainwaters, which have passed on building products in rolled zinc:

Corrosion and runoff mechanisms of rolled zinc used in building applications are very well documented. This knowledge allows modelling accurately zinc emissions, which may be obtained as a function of a number of parameters (atmospheric levels of sulfur dioxide and chloride, slope and orientation of the building elements and rolled zinc surface aspect).

Generally speaking, on average after 5 years of exposure to a yearly precipitation of rain between 470 and 790 mm/year:

- zinc concentration of rainwater, which has passed on natural rolled zinc roof is around 4 mg/L (2),  
- zinc concentration is reduced by 30 % with preweathered rolled zinc such as QUARTZ-ZINC® or ANTHRA-ZINC® (2).

The zinc concentration may be even lower if the rainwater has passed on coated rolled zinc such as PIGMENTO®, then zinc concentration is reduced by 95 % (3).

So generally, in all cases, zinc concentration is lower than the drinkable threshold equal to 5 mg/L when this regulatory threshold exists (4) because, in numerous countries, there is no drinkable threshold for zinc like at the European level (because zinc is not an issue).

Ground seepage:

Due to seepage there can be locally restricted slightly increased zinc concentrations in the ground/ in technical infiltration, like troughs, rigolen systems and absorbing wells. There is no risk of an excess supply of zinc for the soil/plants/animals.

## Health

The use stage of the rolled zinc from VMZINC, used in the envelope applications in the building, can't have an impact on the health of the users.

During installation, use and disassembly no health safety threshold is crossed.

## 2.12 Reference service life

Service lifetime according to *BBSR* (the Federal Office for Building and Regional Planning): > 50 years, The long experience, which has shown numerous very old buildings with rolled zinc products still efficient and the deep theoretical knowledge about the behaviour of rolled zinc exposed to the atmosphere lead to announce a service life of 100 years; the standard *ISO 15686* has not been considered. Description of the influences on the ageing of the product when applied in accordance with the rules of technology.

Description of the influences on the ageing of the product when applied in accordance with the rules of technology.

## 2.13 Extraordinary effects

### Fire

Information on the fire performance according to *EN 13501:1* or established national standards. According to *EN 13501:1*:

- The classes of building products regarding their fire performance are predefined as: A1, A2, B, C, D, E, and F;
- The classes of flaming droplets/particles are pre-defined as: d0, d1, or d2;
- The classes for smoke density are pre-defined as: s1, s2, or s3

### Fire protection

Fire performance:

The AZENGAR® 3R rolled zinc meet the requirements of the building material class A1 "non-flammable" in accordance with the standard EN 13501-1.

Name	Value
Building material class	A1

### Water

The effect of floods on zinc coils and sheets does not lead to product change or any other negative consequences for the environment.

### Mechanical destruction

None

## 2.14 Re-use phase

Scrap of 'new' rolled zinc: rolled zinc scrap, from the VMZINC manufacturing process can be fed back completely into the melting in the VMZINC manufacturing process.

Old rolled zinc: the old rolled zinc, dismantled at its end of life during demolition or renovation works in the building site, can be collected to be sold either directly to secondary smelting works or via a scrap metal dealer.

Indeed, due to its high residual value (60 to 75% of the zinc content is remunerated in value) and to a recycling market very well structured, the recycling rate of the rolled zinc products at its end of life is at their 96 % in Western Europe.

The old rolled zinc can be recycled to be reused in different applications such as steel galvanizing or zinc oxide manufacturing.

The use of recycled material instead of zinc ore has a positive influence on the sustainability of natural resources and also on energy use (significant energy savings from 50 to 90 %).

## 2.15 Disposal

Because of the very high and efficient recycling rate of the rolled zinc products, only 5 % of the old rolled zinc from roofing,

facade or rainwater systems goes to landfill.

Nevertheless, the waste key for zinc is: 17 04 04.

## 2.16 Further information

For further information: vmzinc.com

## 3. LCA: Calculation rules

### 3.1 Declared Unit

This declaration refers to one kilogram of engraved rolled zinc from VMZINC under the trademark AZENGAR® 3R.

#### Declared unit

Name	Value	Unit
Declared unit	1	kg

### 3.2 System boundary

This declaration is a 'Cradle to Gate' with options. It covers modules A1 to A3, modules C1, C2, C3, C4 and modules D.

The aggregated modules A1-A3 include:

- The recovery of rolled zinc scraps and transport to Aubry,
- The manufacturing of the textured and mattified rolled zinc (AZENGAR® 3R),
- The manufacturing of the energy resources (electricity, thermal energy, auxiliaries),
- The manufacturing, transport and end of life of the packaging (including loads and benefits for electricity and thermal energy),
- The end of life of the process wastes.

The electricity consumed is modelled with the dataset 'FR Electricity grid mix Sphera 2020' (GaBi) for France (0.0766 kg CO<sub>2</sub>eq./kWh).

Module C1 corresponds to the De-construction. The dismantling of zinc laminated roofing and facade systems is done manually.

Module C2 corresponds to the transport to Modules C3 and C4.

Module C3 includes pre-treatment before recycling.

Module C4 corresponds to landfill.

Module D includes re-melting and avoided impacts due to the recycling of old rolled zinc.

### 3.3 Estimates and assumptions

No major estimates or assumptions were necessary for this LCA except for the recycling rate, which has been assumed at 95% (European recycling rate for rolled zinc, as reported by the International Zinc Association - IZA).

### 3.4 Cut-off criteria

All the data from the operating data survey, all direct production wastes, all emission measurements available and all transport distances were taken into consideration.

Material and energy flows with a share of less than 1 percent were also taken into consideration.

Only machines, facilities and LPG (liquid petroleum gas) for engines required at the production plant are neglected. It can

be assumed that the sum of ignored processes may not exceed 5 % of the impact categories.

### 3.5 Background data

The *LCA for Experts* (new version of Gabi) software system on comprehensive analysis developed by Sphera used for modelling the life cycle for the manufacturing and recycling of the textured and mattified rolled zinc. All relevant background data records for the manufacturing of zinc are taken from the *LCA for Experts* software database, specific data related to the production of textured and mattified rolled zinc were collected in Viviez and Aubry VM Building Solutions production plant.

### 3.6 Data quality

The consistency of process data and background data (GaBi) has been ensured by relying primarily on industry data, supplemented where necessary by secondary data. The dataset is built upon primary data from internationally recognized production processes, integrated with regional precursor supply chains to ensure representativeness and reliability.

### 3.7 Period under review

The life cycle assessment is based on data collection from Aubry and Viviez production plants of VM BUILDING SOLUTIONS made in 2019. We considered the data over the complete year 2019 (No modifications have been made to the process or furnace since 2019).

### 3.8 Geographic Representativeness

Land or region, in which the declared product system is manufactured, used or handled at the end of the product's lifespan: France

### 3.9 Allocation

Allocation was avoided as much as possible as required by *EN 15804* but allocations had to be done for:

- Emissions into the water. Emissions into the water are due not only to effluents coming from the industrial process of manufacturing of the rolled zinc but also to rainwater coming from the site of soil remediation located near the factory, some allocations have been made for these emissions into the water.

### 3.10 Comparability

Basically, a comparison or an evaluation of EPD data is only possible if all the data sets to be compared were created according to *EN 15804* and the building context, respectively the product-specific characteristics of performance, are taken into account. The background data has been sourced from the Sphera LCA for Experts (GaBi) database, CUP 2023.1."

## 4. LCA: Scenarios and additional technical information

### Characteristic product properties of biogenic carbon

The total mass of biogenic carbon-containing materials, in this case, cardboard and wooden pallets, is less than 5 % of the total mass of the product and accompanying packaging.

### Information on describing the biogenic carbon content at factory gate

Name	Value	Unit
Biogenic carbon content in product	-	kg C
Biogenic carbon content in accompanying packaging	0.011	kg C

Note: 1 kg of biogenic carbon is equivalent to 44/12 kg of CO<sub>2</sub>.

Modules A4-A5 and B1-B7 are not considered in this study. The possible loads and benefits given in Module D are based on the recyclability of zinc products. Since the product is made from 100 % secondary material, and to avoid double counting, Module D is set to zero as the benefit has already been accounted for in Module A1.

Packaging materials for 1 kg of Natural rolled zinc: wood pallets = 0,039 kg, kraft paper = 0,006 kg, polyethylene film = 0,001 kg, polypropylene and steel wire rod = 0,0003 kg.

The C1 module has no declared activity.

Module C2 includes the transport of materials from the demolition/dismantling site to the waste processing site. We assume that 5 % of the material is transported to the landfill over a distance of 50 km by truck, and 95 % of the material is

transported over a distance of 500 km by truck to the recycling center.

The module C3 includes the mechanical selection of the old rolled zinc.

The module C4 includes the landfill of the slight part of the old rolled zinc which is not recovered for being recycled (5 %).

After the collection takes place, recycling loads and credits are both addressed in module D. Service lifetime according to BBSR (the Federal Office for Building and Regional Planning): > 50 years, The long experience, which has shown numerous very old buildings with rolled zinc products still efficient and the deep theoretical knowledge about the behaviour of rolled zinc exposed to the atmosphere lead to announce a service life of 100 years; the standard *ISO 15686* has not been considered.



## 5. LCA: Results

The following Figure shows the relative contribution of the production stages (Module A1-A3), waste treatment (Module C1 C2, C3, C4) and the benefits and loads beyond the product system boundary (Module D) for 1 kg of AZENGAR 3R rolled zinc. The melting to rolling step is the dominating contributor to all indicators of the impact assessment (60 %-90 %) as the main fusion.

**DESCRIPTION OF THE SYSTEM BOUNDARY (X = INCLUDED IN LCA; MND = MODULE OR INDICATOR NOT DECLARED; MNR = MODULE NOT RELEVANT)**

Product stage			Construction process stage		Use stage							End of life stage				Benefits and loads beyond the system boundaries
Raw material supply	Transport	Manufacturing	Transport from the gate to the site	Assembly	Use	Maintenance	Repair	Replacement	Refurbishment	Operational energy use	Operational water use	De-construction demolition	Transport	Waste processing	Disposal	Reuse-Recovery-Recycling-potential
A1	A2	A3	A4	A5	B1	B2	B3	B4	B5	B6	B7	C1	C2	C3	C4	D
X	X	X	MND	MND	MND	MND	MNR	MNR	MNR	MND	MND	X	X	X	X	X

### RESULTS OF THE LCA - ENVIRONMENTAL IMPACT according to EN 15804+A2: 1 kg of textured and mattified rolled zinc 3R

Parameter	Unit	A1-A3	C1	C2	C3	C4	D
Global Warming Potential total (GWP-total)	kg CO <sub>2</sub> eq	6.46E-01	0	3.66E-02	1.5E-02	2.31E-03	0
Global Warming Potential fossil fuels (GWP-fossil)	kg CO <sub>2</sub> eq	6.43E-01	0	3.69E-02	1.51E-02	2.34E-03	0
Global Warming Potential biogenic (GWP-biogenic)	kg CO <sub>2</sub> eq	3.58E-03	0	-9.47E-04	-2.21E-04	-2.89E-05	0
Global Warming Potential luluc (GWP-luluc)	kg CO <sub>2</sub> eq	4.91E-03	0	6.18E-04	8.2E-05	2.38E-06	0
Depletion potential of the stratospheric ozone layer (ODP)	kg CFC11 eq	1.79E-11	0	3.7E-15	2.7E-13	3.86E-15	0
Acidification potential of land and water (AP)	mol H <sup>+</sup> eq	1.91E-03	0	3.22E-04	3.93E-05	7.5E-06	0
Eutrophication potential aquatic freshwater (EP-freshwater)	kg P eq	2.32E-06	0	1.57E-07	7.09E-08	2.12E-09	0
Eutrophication potential aquatic marine (EP-marine)	kg N eq	8.53E-04	0	1.62E-04	8.32E-06	1.88E-06	0
Eutrophication potential terrestrial (EP-terrestrial)	mol N eq	9.44E-03	0	1.79E-03	8.98E-05	2.07E-05	0
Formation potential of tropospheric ozone photochemical oxidants (POCP)	kg NMVOC eq	1.8E-03	0	3.04E-04	2.44E-05	5.9E-06	0
Abiotic depletion potential for non fossil resources (ADPE)	kg Sb eq	3.78E-06	0	3.13E-09	2.85E-09	6.4E-11	0
Abiotic depletion potential for fossil resources (ADPF)	MJ	1.03E+01	0	4.8E-01	3.89E-01	3.49E-02	0
Water use (WDP)	m <sup>3</sup> world eq deprived	4.08E-01	0	5.47E-04	4.94E-03	-3.18E-05	0

### RESULTS OF THE LCA - INDICATORS TO DESCRIBE RESOURCE USE according to EN 15804+A2: 1 kg of textured and mattified rolled zinc 3R

Parameter	Unit	A1-A3	C1	C2	C3	C4	D
Renewable primary energy as energy carrier (PERE)	MJ	1.26E+00	0	4.06E-02	3.33E-01	3.14E-03	0
Renewable primary energy resources as material utilization (PERM)	MJ	0	0	0	0	0	0
Total use of renewable primary energy resources (PERT)	MJ	1.26E+00	0	4.06E-02	3.33E-01	3.14E-03	0
Non renewable primary energy as energy carrier (PENRE)	MJ	1.03E+01	0	4.8E-01	4.17E+00	3.5E-02	0
Non renewable primary energy as material utilization (PENRM)	MJ	0	0	0	0	0	0
Total use of non renewable primary energy resources (PENRT)	MJ	1.03E+01	0	4.8E-01	4.17E+00	3.5E-02	0
Use of secondary material (SM)	kg	1.22E+00	0	0	0	0	0
Use of renewable secondary fuels (RSF)	MJ	0	0	0	0	0	0
Use of non renewable secondary fuels (NRSF)	MJ	0	0	0	0	0	0
Use of net fresh water (FW)	m <sup>3</sup>	1.01E-02	0	4.55E-05	8.49E-04	3.94E-07	0

### RESULTS OF THE LCA - WASTE CATEGORIES AND OUTPUT FLOWS according to EN 15804+A2: 1 kg of textured and mattified rolled zinc 3R

Parameter	Unit	A1-A3	C1	C2	C3	C4	D
Hazardous waste disposed (HWD)	kg	2.29E-04	0	1.55E-11	9.62E-03	2.89E-12	0
Non hazardous waste disposed (NHWD)	kg	1.32E-01	0	7.46E-05	1.13E-01	5.01E-02	0
Radioactive waste disposed (RWD)	kg	3.05E-04	0	6.2E-07	2.49E-04	4.06E-07	0
Components for re-use (CRU)	kg	0	0	0	0	0	0
Materials for recycling (MFR)	kg	8E-02	0	0	9.5E-01	0	0
Materials for energy recovery (MER)	kg	0	0	0	0	0	0
Exported electrical energy (EEE)	MJ	0	0	0	0	0	0
Exported thermal energy (EET)	MJ	0	0	0	0	0	0

### RESULTS OF THE LCA - additional impact categories according to EN 15804+A2-optional: 1 kg of textured and mattified rolled zinc 3R

Parameter	Unit	A1-A3	C1	C2	C3	C4	D
Incidence of disease due to PM emissions (PM)	Disease incidence	1.26E-08	0	2.03E-09	3.81E-08	8.09E-11	0



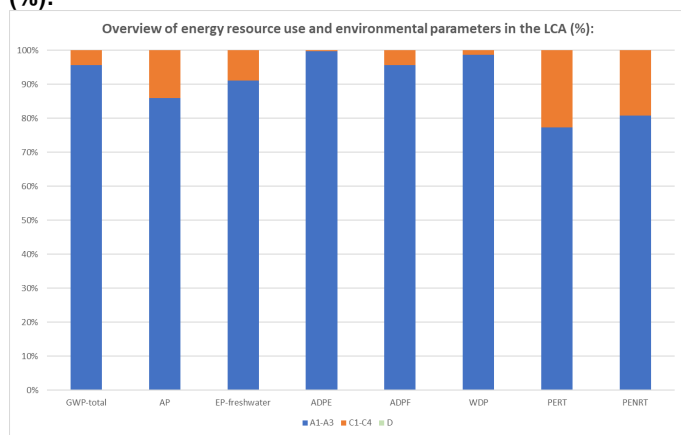
Human exposure efficiency relative to U235 (IR)	kBq U235 eq	9.24E-02	0	8.66E-05	1.67E-01	6.01E-05	0
Comparative toxic unit for ecosystems (ETP-fw)	CTUe	3.56E+00	0	3.53E-01	1.13E+00	1.04E-02	0
Comparative toxic unit for humans (carcinogenic) (HTP-c)	CTUh	1.99E-10	0	7.12E-12	1.38E-08	1.23E-12	0
Comparative toxic unit for humans (noncarcinogenic) (HTP-nc)	CTUh	1.35E-08	0	3.16E-10	1.63E-06	1.17E-10	0
Soil quality index (SQP)	SQP	2.11E+00	0	2.37E-01	1.63E-01	3.26E-03	0

Disclaimer 1 – for the indicator “Potential Human exposure efficiency relative to U235”. This impact category deals mainly with the eventual impact of low-dose ionizing radiation on human health of the nuclear fuel cycle. It does not consider effects due to possible nuclear accidents, occupational exposure or radioactive waste disposal in underground facilities. Potential ionizing radiation from the soil, radon and from some construction materials is also not measured by this indicator.

Disclaimer 2 – for the indicators “abiotic depletion potential for non-fossil resources”, “abiotic depletion potential for fossil resources”, “water (user) deprivation potential, deprivation-weighted water consumption”, “potential comparative toxic unit for ecosystems”, “potential comparative toxic unit for humans – cancerogenic”, “Potential comparative toxic unit for humans - not cancerogenic”, “potential soil quality index”. The results of this environmental impact indicator shall be used with care as the uncertainties on these results are high as there is limited experience with the indicator.

## 6. LCA: Interpretation

### Selected energy and environmental indicators by module (%)



environmental indicator of module A1-A3 at :

- 70.6 % of the Abiotic depletion potential for fossil resources,
- 91 % of the global warming potential,
- 43.5 % of the Eutrophication potential,
- 53.5 % acidification potential

One of the other steps contributing more particularly to environmental indicators of module A3 is the 'Matting' step; it contributes at:

- 97.4 % of the Abiotic depletion potential for non fossil resources,
- 52.4 % of the Ozone Depletion Potential,
- 41 % of the Eutrophication potential
- 24.9 % of the global warming potential.

The main module contributing to the environmental indicators is the module A1-A3 with a contribution of 77 to 98.9 %.

'Melting to rolling' step is one of the main contributors to the

## 7. Requisite evidence

### Runoff rate evidences:

**Experimental setup:** Duration 1 year (June 1998 to June 1999), in Stockholm, Sweden, titanium zinc sheet 0.7 mm thick in surface qualities VMZINC® bright-rolled and pre-weathered QUARTZ-ZINC® and ANTHRA-ZINC®, inclination of roof = 45°, roof surface direction south facing.

**Measuring agency:** Royal Institute of Technology, Department of Materials Science and Engineering, Division of Corrosion Science – Stockholm in Sweden

**Report of results:** 'Atmospheric corrosion of zinc-based materials: runoff rates, chemical speciation and ecotoxicity effects' – I.Odenewall Wallinder, C.Leygraf, C.Karlen, D.Heijerick and C.R.Janssen – Corrosion Science n°43 – pp 809-816 - 2001

### Result:

As part of this study annual runoff rates were taken from bright-rolled VMZINC® and pre-weathered QUARTZ-ZINC® and ANTHRA-ZINC® (other zinc-based construction materials were part of this study).

The average annual SO<sub>2</sub> concentration at the measuring agency was 3 µg/m<sup>3</sup>, the total amount of precipitation during the experiment was 540 mm.

The runoff rates of bright-rolled VMZINC® is the following: 2.3 g/m<sup>2</sup>/year.

## 8. References

### EN 15804

EN 15804:2012+A1 2013, Sustainability of construction works — Environmental Product Declarations — Core rules for the product category of construction products.

### EN 15804

EN 15804:2012+A2:2019+AC:2021, Sustainability of construction works — Environmental Product Declarations — Core rules for the product category of construction products.

### ISO 14025

EN ISO 14025:2011, Environmental labels and declarations —

Type III environmental declarations — Principles and procedures.

#### **ISO 14001**

2009-11, Environmental Management Systems - Requirements and Instructions for Application (ISO 14001:2004 + Cor. 1:2009); German and English version EN ISO 14001:2004 + AC:2009

#### **ISO 9001**

ISO 9001:2015, Quality management

#### **waste keys**

Regulatory classification of waste Application guide for characterization in danger - 2016 -INERIS

#### **EN 14782:2006**

EN 14782:2006, Self-supporting metal sheet for roofing, external cladding and internal lining

#### **EN 14783:2013**

EN 14783:2013, Fully supported metal sheet and strip for roofing, external cladding and internal lining. The products are CE-marked based on these standards

#### **DIN EN ISO 14040**

2006-10, Environment Management – Ecological Analysis – Basic Principles and Framework Conditions (ISO 14040:2006);

#### **DIN EN ISO 14044**

DIN EN ISO 14044:2006-10, Environment Management – Ecological Analysis – Requirements and Instructions (ISO 14044:2006); German and English versions EN ISO 14044:2006

#### **DIN EN 13501-1**

DIN EN 13501-1:2007-05, Classification of Building Products and Methods by Fire Performance – Part 1: Classification with the results of tests on fire performance by building products; German version EN 13501-1:2007

#### **DIN EN 1179**

DIN EN 1179:2003-09, Zinc and Zinc Alloys - Primary Zinc, German Version EN 1179:2003

#### **DIN EN 988**

DIN EN 988:1996-08, Zinc and Zinc Alloys - Requirements of Rolled Flat Products for Use in Construction; German Version EN 988:1996

#### **ISO 15686**

ISO 15686 Buildings and constructed assets - Service life planning

#### **LCA for Experts**

LCA for Experts. Software and data basis for Life Cycle Engineering. LBP, University of Stuttgart und SPHERA, 2023

#### **IBU 2021**

Institut Bauen und Umwelt e.V.: General Instructions for the

EPD programme of Institut Bauen und Umwelt e.V., Version 2.0, Berlin: Institut Bauen und Umwelt e.V., 2021 [www.ibu-epd.com](http://www.ibu-epd.com)

#### **Atmospheric corrosion, runoff and environmental effects of zinc-based materials (1)**

'Atmospheric corrosion, runoff and environmental effects of zinc-based materials', I.Odnevall and Al. Workshop 'Galvanizing of steel strip' Luxembourg February 27-28th, 2002

#### **IZA – SHG LCA**

IZA 2022 Primary Zinc LCA Report\_update 20231225 SPHERA

#### **PCR 2024, Part A**

Institut Bauen und Umwelt e.V., Berlin: Product Category Rules for Building-Related Products and Services from the range of Environmental Product Declarations of Institut Bauen und Umwelt (IBU), Part A: Calculation Rules for the Life Cycle Assessment and Requirements on the Project Report. April 2022 - Version 1.4 [www.ibu-epd.de](http://www.ibu-epd.de)

#### **PCR 2023, Part B**

Institut Bauen und Umwelt e.V., Berlin: Product Category Rules for Construction Products from the range of Environmental Product Declarations of Institut Bauen und Umwelt (IBU), Part B: Requirements on the EPD for Building metals. October 2023 - Version 8 [www.ibu-epd.de](http://www.ibu-epd.de)

#### **Regulation (EU) No. 305/2011**

Regulation (EU) No. 305/2011 of the European Parliament and of the Council of 9 March 2011, laying down harmonised conditions for the marketing of construction products (Construction Products Regulation – CPR)

#### **SVHC Candidate List**

Candidate List of Substances of Very High Concern for Authorisation, published by ECHA under Article 59(1) of Regulation (EC) No 1907/2006 (REACH), updated regularly – latest version available on the ECHA website

#### **Biocidal Products Regulation (BPR)**

Regulation (EU) No. 528/2012 of the European Parliament and of the Council of 22 May 2012 concerning the making available on the market and use of biocidal products (Biocidal Products Regulation – BPR)

#### **BBSR**

Federal Institute for Research on Building, Urban Affairs and Spatial Development (BBSR), publications and databases related to sustainable construction and life cycle assessment, including ÖKOBAUDAT – latest version available at [www.oekobaudat.de](http://www.oekobaudat.de)

#### **Product Category Rules for Building-Related Products and Services**

Part A: Calculation Rules for the Life Cycle Assessment and Requirements on the Project report. Version 1.3



**Publisher**

Institut Bauen und Umwelt e.V.  
Hegelplatz 1  
10117 Berlin  
Germany

+49 (0)30 3087748- 0  
[info@ibu-epd.com](mailto:info@ibu-epd.com)  
[www.ibu-epd.com](http://www.ibu-epd.com)

---



**Programme holder**

Institut Bauen und Umwelt e.V.  
Hegelplatz 1  
10117 Berlin  
Germany

+49 (0)30 3087748- 0  
[info@ibu-epd.com](mailto:info@ibu-epd.com)  
[www.ibu-epd.com](http://www.ibu-epd.com)

---



**Author of the Life Cycle Assessment**

VM Building Solutions  
place Aimé Césaire 3  
93100 Montreuil  
France

+330149724284  
[norman.herlin@vmbuildingsolutions.com](mailto:norman.herlin@vmbuildingsolutions.com)  
<https://www.vmbuildingsolutions.com/en/>

---



**Owner of the Declaration**

VM Building Solutions  
place Aimé Césaire 3  
93100 Montreuil  
France

+330149724284  
[norman.herlin@vmbuildingsolutions.com](mailto:norman.herlin@vmbuildingsolutions.com)  
<https://www.vmbuildingsolutions.com/en/>