

## ANTHRA-ZINC®

### DARK GREY PRE-WEATHERED TITANIUM ZINC

ANTHRA-ZINC is a surface treated rolled zinc, alloyed with copper and titanium, compliant with the European standard EN 988 and with the more stringent Premium zinc, the VMZINC quality standard.

#### DESCRIPTION AND CHARACTERISTICS

The pre-weathered patina of the ANTHRA-ZINC® is the result of a chemical process, which consists in the modification of the external surface of natural titanium zinc.

ANTHRA-ZINC® provides a uniform and homogeneous **dark grey** colour, similar to that of slate, and its chromatic co-ordinates of ANTHRA-ZINC® are  $Y = 6 \pm 1$  ;  $x = 0,32$  ;  $y = 0,32$ .

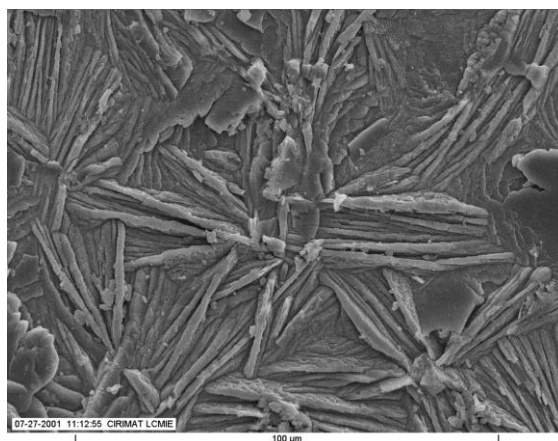
The mean characteristics of this thin conversion layer are the following:

- Nature : quadrihydric zinc phosphate  $Zn_3(PO_4)_2 \cdot 4H_2O$  (hopeit)
- Weight : 70 mg/dm<sup>2</sup>
- Thickness : about 2 micrometer
- Solubility : insoluble in water

The patina of ANTHRA-ZINC® is perfectly environment-friendly.

At the end of the preweathering process of ANTHRA-ZINC®, a Thin Organic Coating (TOC) of 1 to 2 micrometers is applied on both sides of the zinc strip. For specific application, such as composite panel lamination, the TOC is applied on the upper side only.

This TOC is an acrylic resin containing innovative anticorrosion agents, without chromates.



## ENVIRONMENTAL PROPERTIES

ANTHRA-ZINC environmental qualities have been assessed through Life Cycle Analysis (LCA). The results, showing at the building scale the positive contribution of ANTHRA-ZINC to sustainability, are available through the following Environmental Product Declaration (EPD) – FDES (France), IBU (Germany) – downloadable from national public database and from the VMZINC websites.

More information on ANTHRA-ZINC (condition of use, weathering,...) is available on VMZINC websites or from VMZINC offices.

**Department Head Quality  
VM BUILDING SOLUTIONS**

A handwritten signature in black ink, appearing to read 'A. J. J. J.', is centered below the title.

November 2017